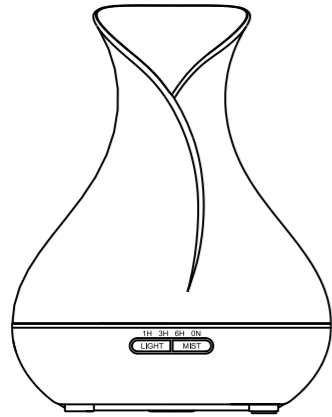
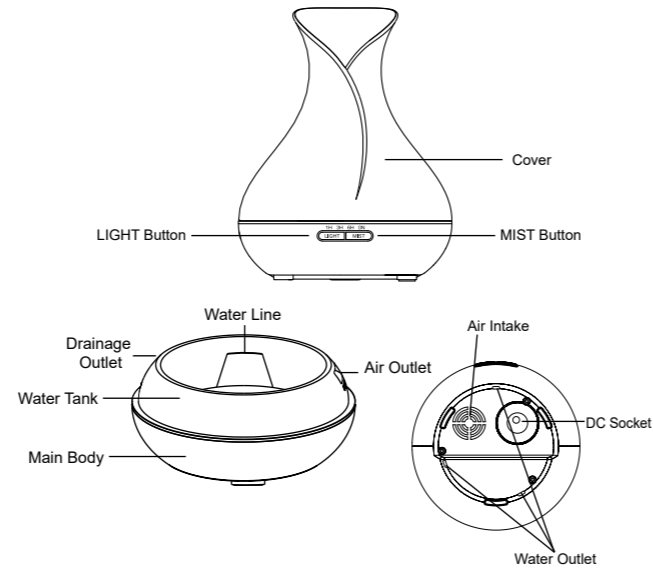


DEVANTI® Aroma Diffuser User Manual DIFF-519W-DW



Aroma Diffuser

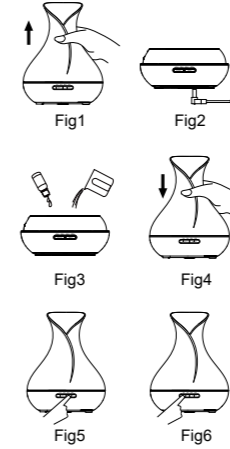
This Aroma Diffuser uses Ultrasonic principle which can atomize the water and essential oil in the water tank, and produces a cool, humid and fragrant mist.



Aroma Diffuser

OPERATION

- Position the Aroma Diffuser upright, pull vertically upwards to remove cover. (Fig. 1)
- Connect AC adaptor power cord into the DC input jack at the base of the Aroma Diffuser. It is suggested to route cable via track provided. (Fig. 2)
- Pour water and essential oil into Aroma Diffuser. DO NOT fill in excess of 'MAX' marking 400ml. DO NOT use boiling water. DO NOT fill when power is on. It is recommended to add 2-3 drops of essential oil for each 100ml of water. (Fig. 3)
- Re-install cover. Spout is adjustable to guide aroma into desired direction. Aroma Diffuser must NOT be operated without the cover. (Fig. 4)
- Connect AC adaptor with power from wall socket.
- To switch on, press "MIST" and choose operation time required (1 hour, 3 hour, 6 hour or ON Continuous). Mist level is adjustable by hard-pressing "MIST" until the Aroma Diffuser beeps (One beep for high and two beeps for low). To switch off, press "MIST" through following cycle until it is off. (1 hour -> 3 hour -> 6 hour -> ON Continuous -> Off) (Fig. 5)
- Press "LIGHT" to switch on LED light. Brightness is adjustable through the following cycle. (Bright -> Dim -> Off) (Fig. 6)
- It is recommended to drain water from tank and keep dry for extended idle period.
- When connect with power, the original state of aroma diffuser is still off.
- Misting operation and light will switch off automatically when there is insufficient water, even press "MIST", aroma diffuser is also switch off automatic.



Aroma Diffuser

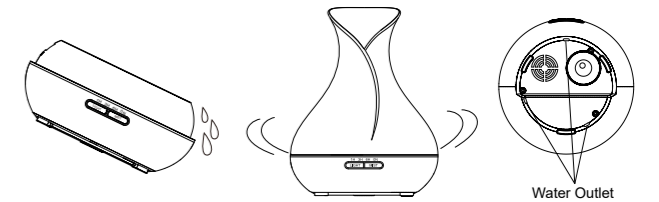
ATTENTION

- The amount and intensity of mist produced will vary, but this is not unusual and should not be considered as a fault.
- Factors that affect this include water type, humidity, temperature, air currents.
- Auto power off when water runs out.
- Applies only 100% natural essential oil, if they contain chemical ingredients, flavors or impurities may cause damage to the product.
- Before replacing another essential oil, follow the maintenance part to clean the product.

ACCIDENTAL LEAKAGE

In the event of the unit being knocked over or tipped during use, please follow the steps as below to avoid malfunction:

- Unplug the unit and remove cover.
- Pour out any remaining water from the water tank.
- Shake the unit gently to drain water, and then keep it natural air drying for at least 24 hours.



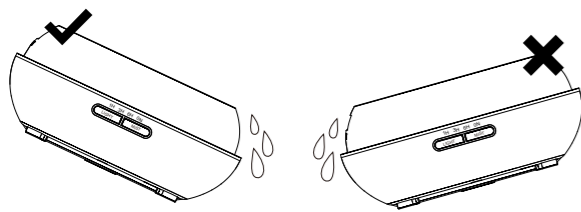
Aroma Diffuser

MAINTENANCE

After using 5-6 times, or 3-5 days, please clean the product as follow:

- Unplug the unit and remove cover.
- Pour out any remaining water from the tank.
- Add a small amount of warm kitchen detergent to clean, use swab to wipe it gently, and then use cleaning cloth to dry it lightly.
- Refer to the following pictures, to avoid water flow into the air outlet, pour off water abide by the left picture, not the right one.
- Do not use other acids or enzymes detergent, as this may give off poisonous gas or cause malfunction.

Note: Be sure to use a mild detergent.



Aroma Diffuser

PRECAUTIONS

Please check below to avoid malfunction of the unit:

- It is not allow to change, dismantle, or repair the unit if you are not the technician. Please contact the selling department to repair if necessary.
- Do not switch on power when the tank is empty.
- Do not touch the atomization piece.
- Clean regularly as per Maintenance instructions to avoid malfunction.
- Always unplug before maintenance.
- For hygiene reasons, after use, pour away remaining water from "DRAINAGE SIDE" of tank, and wipe with a clean dry cloth.
- Essential oil can corrode in the event of spillage of contact, please wipe away with a soft cloth.
- Only use the measuring cup to add water into the tank, do not fill water directly from the water pipe.
- Do not let mist directly to the furniture, clothing, walls etc.
- Keep away from direct sunshine heat sources and air conditioners or fans.
- Always keep on stable flat surface do not put on carpet, duvet or unstable area.
- Keep away from electronic equipment, such as TV and Audio equipment.
- Wait 60 minutes before restart to avoid damage atomization piece.
- Don't use sparkling water, tap water and mineral water are available.
- Never move product when it is working.
- Do not touch any part of the product with wet hands.
- Keep away from the child and pet, child is not allow to play without supervisor. This product is not suitable for the child and people who don't know the product and have no experience.
- If the cable is smoking, burning, unplug immediately.

Aroma Diffuser

TROUBLESHOOTING

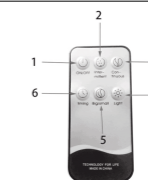
Please refer to the table below in the event of the product operating abnormally:

If product doesn't work well, please refer to the following points before requesting repairs:	
Will not switch on or switch off	<ul style="list-style-type: none"> Is there enough water in the tank? --Please add water to the tank Is the power cord connected properly? --Please disconnect, check cables and re-connect carefully.
No mist or abnormal mist	<ul style="list-style-type: none"> Not enough water? or too much water? --Please add suitable amount of water in the tank, water must never be filled over 400ML (MAX)line. Dirt on the atomization piece? --Please refer to maintenance instructions remove and re-install correctly, so mist can be released freely. Cover and inner cover are not installed properly? Dirt on the air suction port on the underside of the base? --If too much dust in the air suction port, the mist will be restricted to come out. Just clean it.
Water leakage from product	<ul style="list-style-type: none"> Cover and inner are not installed properly? --Remove and reinstall correctly, so mist can be released freely. Low temperature or high humidity? --Under these conditions, the mist may condense quickly into water droplets.

Aroma Diffuser

SPECIFICATIONS

Dimensions	Approx 168x168x215MM
Weight(excluding adaptor)	Approx 470G
Power: Input/Output	AC100-240V 50/60Hz DC24V 650mA
Length of cord	Approx 170CM
Power	Approx 14W
Time Mode	1H/3H/6H/ON
Tank Capacity	400ML
Material	PP/ABS/PC
Accessory	AC Adapter and manual
Working frequency	2.4MHz



No	Button	Function
1	ON/OFF	ON/OFF
2	Intermittent	Press to enter intermittent mode
3	Continuous	To continuous spray
4	Light	Press it to turn on the LED light, seven light color option
5	Big/small	High Mist/Low Mist
6	Timing	To select 1H/3H/6H or ON mode

Aroma Diffuser