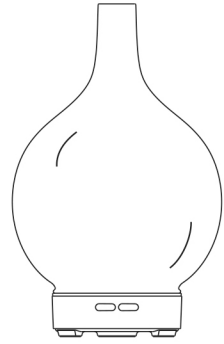


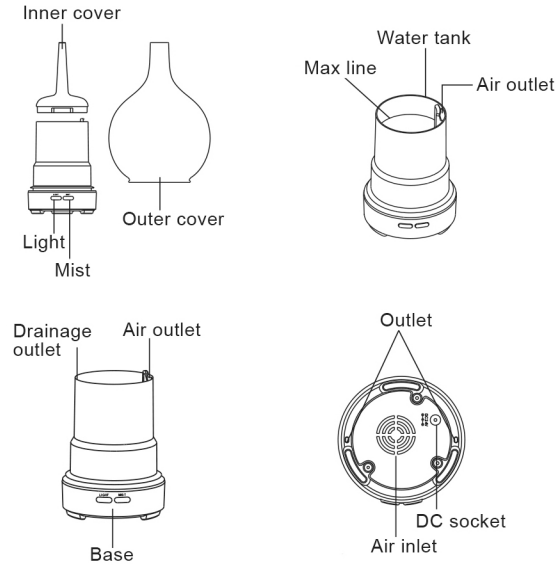
DEVANTI

AROMA DIFFUSER MODEL: DIFF-G3-DW

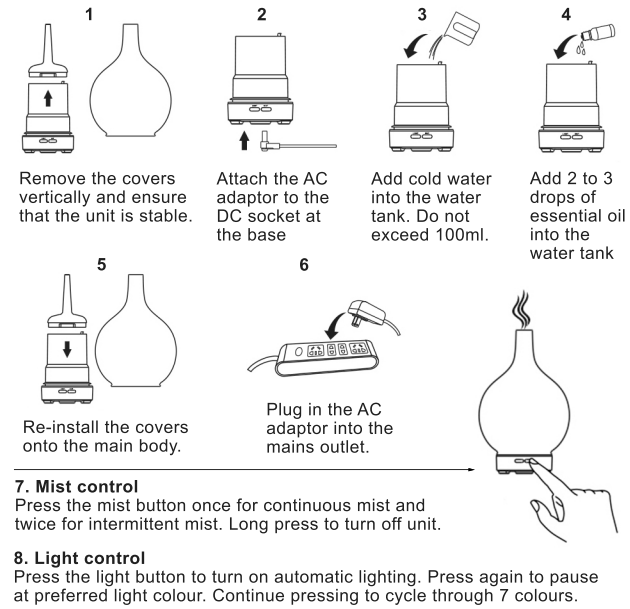


USER MANUAL

COMPONENTS



OPERATION



ATTENTION

- If the unit will not be used for a long time, please drain any remaining water and clean the appliance. Keep it in a cool and dry place. Before re-using, clean the unit with a neutral detergent.
- If the water level inside the unit is too low, the unit will automatically stop working.
- The amount and intensity of mist produced will vary. This is considered normal and not a fault. Factors that affect mist characteristics include water type, humidity, temperature and air currents.
- Use only 100% essential oils as inferior essential oils contain chemicals, flavours or impurities that may damage the product.
- Before replacing any essential oil, please perform proper maintenance and cleaning of the unit before doing so.

ACCIDENTAL LEAKAGE

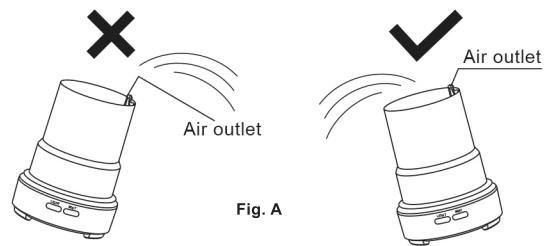
In the event that the unit is knocked or tipped over during use, please follow the steps below to avoid product malfunction.

- Unplug the unit and remove the cover.
- Pour any remaining water from the water tank.
- Shake the unit gently to drain water, and then let it air dry naturally for at least 24 hours.

MAINTENANCE

After using for about five to six hours or for three to five days, clean the diffuser in accordance with the steps below:

- Unplug the unit for the mains supply and remove the cover.
- Pour out any remaining water from the tank. Make sure that you pour out the water from the drainage outlet side and not the air outlet side (Fig A). If not, water will get into the unit.



- Add a small amount of mild kitchen detergent to water and dampened a cloth in it to gently wipe the unit. After that, wipe it dry with a clean cloth.
- Do not use acids or enzyme-based detergents as they are hazardous and may damage the unit.

PRECAUTIONS

Please take note of the following precautions to avoid damage to the unit.

- Do not overfill beyond the maximum 100ml capacity in the water tank.
- Do not switch on the power of the unit when the water tank is empty.
- Do not touch the ultrasonic vibration plate.
- Clean the unit regularly as per instructions outlined in the user manual.
- Always unplug the unit from the power supply before maintenance.
- For hygienic reasons, please pour away remaining water when the unit is not in use and wipe the unit dry with a clean cloth.
- Essential oils can stained the unit. If the oil is spilled and comes into contact with the surface, wipe it away immediately with a soft cloth.
- Use a measuring cup (not supplied) to add water into the tank. Do not fill in water directly from a tap.
- Do not let the mist come into contact with furniture, clothing or walls.
- Keep the unit away from direct sunshine, other heat sources, air conditioners and fans.
- Always place the unit on a stable surface and do not place it on carpets or other unstable surfaces.
- Do not place the unit on top of electrical and electronic devices such as computers, TV sets and audio equipment.
- Do not tip over the unit as this may cause water to enter into its ultrasonic components and cause malfunction.
- Use only tap water for refill. Do not use mineral water or sparkling water.
- Never move the unit when it is in operation.
- Do not touch any part of the unit with wet hands.
- Keep the product out of reach of children and pets.
- If smoke or a burning smell is detected from the unit, unplug it immediately.
- Do not attempt to dismantle the unit to repair it. Contact qualified service personnel for assistance.

TROUBLESHOOTING

PROBLEM	POSSIBLE CAUSE	SOLUTION
The unit will not switch on or off.	<ul style="list-style-type: none"> Is there enough water in the tank? Is the power cord connected properly? 	<ul style="list-style-type: none"> Add water to the tank. Disconnect, check and re-connect carefully.
No mist or abnormal mist.	<ul style="list-style-type: none"> Not enough or too water? Dirt on the ultrasonic plate? Cover and inner cover not installed properly? Or dirt in the air suction port on the underside of the base? 	<ul style="list-style-type: none"> Add a suitable amount of water into the tank. Do not overfill above the maximum 300ml mark. Remove and install properly according to user manual. Clear the dust from the air suction port.
Water leakage from unit.	<ul style="list-style-type: none"> Cover and inner cover not installed properly? Low temperature or high humidity may cause mist to condense into water droplets. 	<ul style="list-style-type: none"> Remove and install properly according to user manual. Ensure that the temperature and humidity are within operation range.

SPECIFICATIONS

Dimensions	145mm x 145mm x 230mm
Weight (excludes adaptor)	Approx. 296g
Voltage input/output	AC240V/50-60Hz / 24V 500mA
Power	Approx. 7W
Mist mode	Continuous/Intermittent
Tank capacity	100ml
Power cord length	Approx. 150cm
Ultrasonic frequency	2.4MHz
Materials	PP/ABS/Glass
Accessories	AC adaptor