

# DEVANTI

## Full Function Portable Evaporative Cooler



### Instruction Manual

Model:EAC-C-RC-11C-WH

# Important Safeguards

**When using electrical appliances, in order to reduce the risk of fire, electric shock and/or injury, these basic safety precautions should always be followed:**

## For Your Safety

***Read all instructions carefully, even if you are familiar with the appliance.***

- To protect against the risk of electric shock, DO NOT IMMERSE power cord or plug in water or any other liquid.
- This appliance is not intended for use by persons (including children) with reduced physical, sensory and mental capabilities, or lack of experience and knowledge, unless they have been given supervision or instruction concerning use of the appliance by a person responsible for their safety.
- Children should be supervised to ensure that they do not play with the appliance.
- Always unplug the unit when not in use.
- Do not operate unit with a damaged power cord or plug, or after a malfunction, has been dropped or is damaged in any manner. Return the unit to an authorised service facility for examination.
- This unit is not intended for use in bathrooms, laundry areas or similar moist indoor locations. Never locate the unit where it may fall into a bathtub or other water container.
- Do not run the power cord under carpeting or cover the power cord with throw rugs, runners or the like. Arrange the power cord away from traffic areas and where it will not be tripped over.
- Do not place the power cord over any part of the unit.
- Do not plug this unit into an extension lead, double adapter or power board.
- To disconnect the unit set main switch to OFF then remove the plug from the outlet.
- This unit has hot electrical parts inside. DO NOT use it in areas where gasoline, paint or flammable liquids are used or stored.

- Do not insert or allow foreign objects to enter any ventilation or exhaust opening as this may cause an electric shock, fire or could damage the unit.
- Use the unit only as described in this booklet. Any other use not recommended by the manufacturer may cause fire, electric shock or injury to persons.
- Fully remove the power cord from the power cord tidy before use. Always uncoil the power cord before applying power.
- This product must always be used AND STORED in the upright position.
- Do not use this unit with a programmer, timer or any other device that switches the unit on automatically, since a fire risk exists if the unit is covered or positioned incorrectly.
- Batteries must be inserted into the remote control which must be pointed direct at the unit, using the front portion to activate.
- Use indoor only.
- If it is necessary to move the unit after the water has been added, roll gently to the required position.
- Do not move the machine when it is in use.
- Always ensure that there is water in the tank when in use for cooling.
- Do not block air circulation
- Do not use hot water.
- Place the machine on a level surface.
- Unplug the appliance during filling and cleaning.

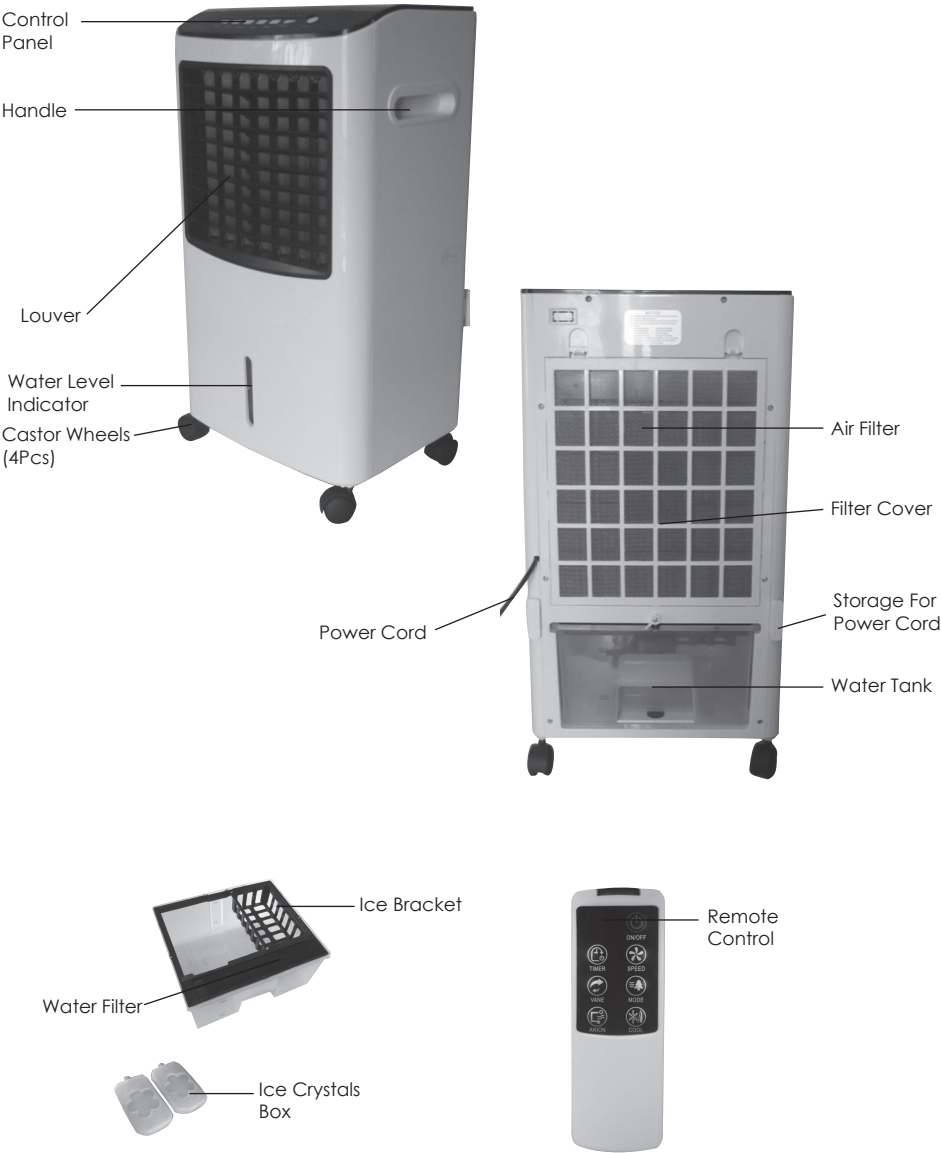
## Warning

If the supply power cord is damaged, the power cord must be replaced by the manufacturer, its service agent or similarly qualified persons in order to avoid a hazard.

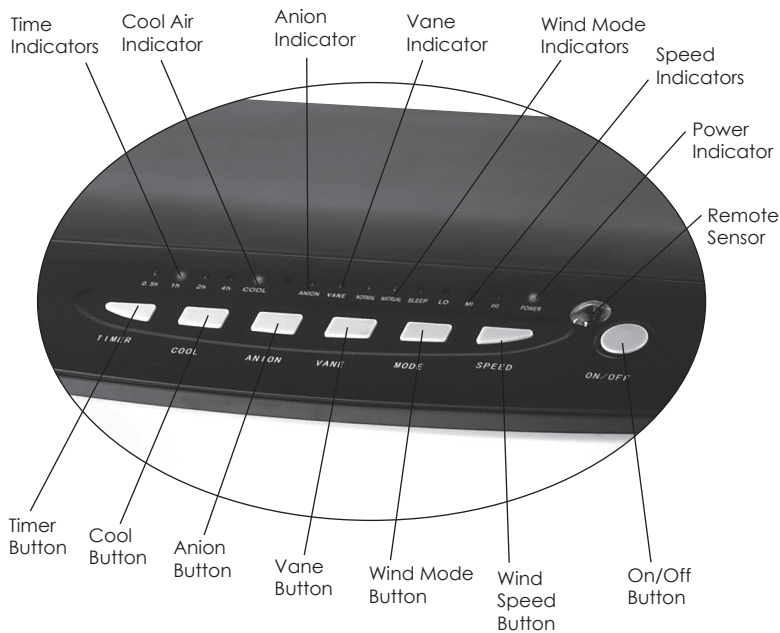
This product has not been designed for any uses other than those specified in this booklet.

## Save These Instructions

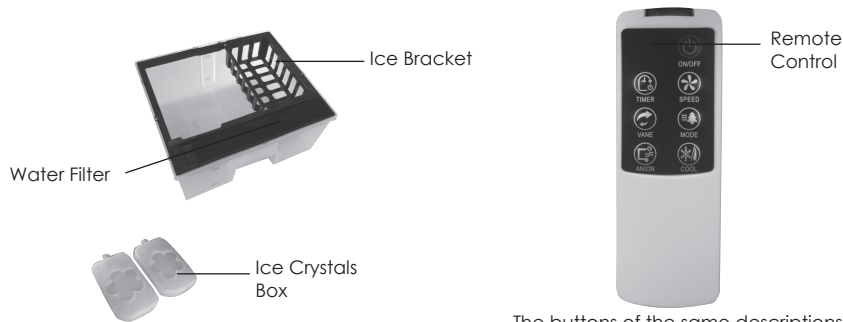
# Features of Your Full Function Portable Evaporative Cooler



# Features of Your Full Function Portable Evaporative Cooler



**Control Panel**



The buttons of the same descriptions on the main unit/remote control have the same functions.

# Your Full Function Portable Evaporative Cooler

Congratulations on the purchase of your new Full Function Portable Evaporative Cooler.

Before first using your Mistral Full Function Portable Evaporative Cooler it is most important that you read and follow the instructions in this use and care booklet, even if you feel you are quite familiar with this type of appliance.

Your attention is drawn particularly to the section dealing with IMPORTANT SAFEGUARDS. Find a place and keep this booklet handy for future reference.

Your Full Function Portable Evaporative Cooler is safe and easy to use. It has been designed to function quietly and safely under normal circumstances.

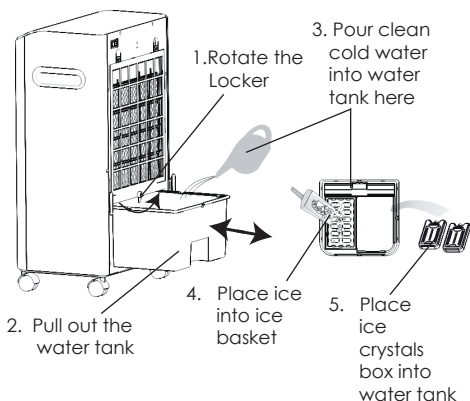
## Hints for Better Cooling

1. Your cooler requires a supply of fresh air. Place the cooler near an open window or leave the door to the room open. Then open another outside window or door on the opposite side of the room so that you create "flow through" ventilation. The cooler will not work properly in a closed room.
2. As an addition place the cooler near the entrance to the room. The cooler will draw cool air from other parts of the house and further bring down temperature.
3. Start your cooler when the room is still cool. You may leave it running all day. You will find that this system works best and keeps the room cooler.
4. Place ice crystals box in your refrigerator and let it freeze for 1 to 2 hours, then place it to the water tank. It will be good cooling efficiency.
5. Add cold water and ice to the water tank. Turn on the cool switch and the filter pad will become damp. The air is drawn in through back panel and across the filter pad to release cool clean air. It may take a few minutes for the pad to become saturated.
6. Since humidity changes from hour-to-hour and day-to-day, when it is too humid, you may use your cooler as a fan. Just turn cooler on but do not turn on cool button.

# Operation

## OPERATION(Do Not connect the power plug as yet)

1. Remove all packaging and check the appliance for any damages during transportation. Place the unit on a level surface in a stable upright position.
2. Pour clean cold water into the water tank, observing the water level indicator and do not overfill past the MAX water indicator mark.



If desired, place ice in the ice bracket of water tank.

### CAUTION:

When moving the unit, do so with extreme caution, so as not to spill any water in the reservoir. The unit should be moved slowly and in a sideways direction.

### CAUTION:

Ensure ice crystals box is kept away from children, consuming will be harmful

Always keep the unit upright.

3. Connect the unit to a power outlet of the same voltage and frequency as indicated on the rating plate. The unit's ON/OFF LED light for the power will turn on to indicate that there is power to the unit.

4. Turn the unit ON by pressing the ON/OFF button once. The unit will start with the fan in normal mode and on hi speed setting. Further operation can be performed via pressing the SPEED, MODE, VANE, ANION, COOL and TIMER buttons.
5. If you wish to turn the unit off at a pre-determined time, please press the TIMER button. The unit can be set to turn off at any time between 0.5 hour and 7.5 hours from "Turn On" by pressing the TIMER button. If no time is selected, the unit will operate continuously. The time set can be incremented in 0.5hr steps and the selected time is indicated by a combination of indicator lights. e.g. 5.5 hrs is indicated by the 4hr LED, the 1hr LED and the 0.5hr LED being illuminated simultaneously.

6. To initiate the cooling function, press the COOL button. It will take approximately 2 minutes for the air to cool.

**Note: If this button is not depressed the unit will only circulate "room temperature" air.**

7. Move the horizontal louvers for the air outlet to blow up or down to suit.
8. The vertical louvers can be set to a direction or allowed to rotate by pressing the VANE button.
9. All the functions can be performed with the remote control supplied with this unit.
  - a) Remove battery cover and install two "AAA" batteries as indicated. (Please observe correct battery polarity, batteries not included).
  - b) Point the remote towards the unit and press the appropriate button. The remote control will operate up to 4 meters from the unit.
10. Press the ON/OFF button again to cancel all functions.
11. When not in use disconnect the unit from the power outlet.

**Note: Initial setting is "normal" mode and "Mi" speed.**

**A. ON/OFF:** Press the button once to start air cooler. Press again to Power OFF the air cooler. When cooler is plugged into the main socket, the LED light will be illuminate indicating the air cooler now has power and is ready to be switched ON or OFF.

**B. SPEED:** Press to change fan speed from "Mid-High-Low", relative SPEED LED lights turn on. SPEED function High-Mid-Low and also be used in-conjunction with the NORMAL, SLEEP and Natural function.

**C. MODE:** There are 3 mode functions, Normal, Natural and Sleep.

- **Normal mode:** Constant air flow and can be adjusted via the SPEED function button. Example, Normal LOW or Normal High or Normal Medium.
- **Natural mode:** Programmed to simulate Natural air flow (breeze) as though it were entering via the window. This mode is preferred for use when constant air flow (Normal mode) is not suitable. Natural mode can be operated in HIGHT or MEDIUM or LOW speed.
- **Sleep mode:** Programmed to provide comfort while the user is asleep.

**Note: All above can be operated via the remote control shown on page 3.**

**D. VANE:** Press once, the indicating LED will light up, and the louver of the air cooler begins to swing horizontally and blow cool air. Press the button again, the light is now OFF. The louver of the air cooler stops swinging, and the air will be blowing in one direction.

**E. ANION:** To gain fresh air in your room, just press ANION button and the build-in ionizer will operate. the indicating LED will light up,

**F. COOL:** Press once to operate the COOL function. This function begins with the process of soaking the air filter in water so that normal air passing through the air filter will be cooler when blown out. Press the button again to switch this function OFF, and the unit will operate the fan mode only.

**Note: The alarm will ring when you press the Cool button if there is not enough water in water tank.**

**Note: Under the cooling mode, the appliance will delay 5 minutes to stop working when you shut off the unit or timer is complete, during the extended period, the timer pilot lamp will flash.**

## G. TIMER

Set the length of time before the cooler switches itself OFF. Press once for each 0.5hr increment. Maximum allowable is 7.5hrs. Example of use: If the 0.5hr and 1.0hr lights are on at the same time, it means the unit will continue to run for 1.5hrs before automatically switching OFF. The TIMMER function is OFF when no time LEDs are illuminated.

## Specifications

Model No	EAC-C-RC-11C-WH
Rated Voltage & Frequency	220-240V~50Hz
Rated Power	65W
Capacity of Water Tank	8.0L
Water Consumption	1.0L/h

# How to Clean

To ensure effective humidifying and filtering, it is recommended that the filter be cleaned once every two weeks.

Disconnect the unit from the mains supply before cleaning.

To clean the exterior surfaces simply wipe over with a soft damp cloth. Should it be necessary, greasy marks may be removed from the surfaces by using mild soap and a cloth dampened in hot water. Avoid all other types of detergents, cleaners, solvents that may contain chemicals, which could damage parts of the unit. Thoroughly dry all parts before storage or further use.

## Water Tank

1. Take out the water tank. Refer to Fig. 1.

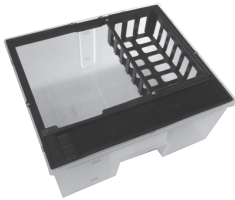
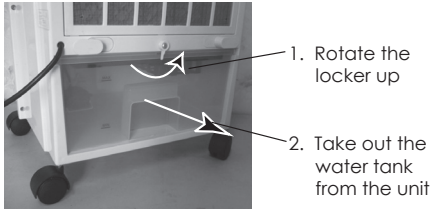


Fig. 1

**Note: Do not put this cooler directly under a water tap, use a proper container to fill water to avoid splashing and damaging to the electric appliance.**

2. Flush and rinse out the water tank.

## Air Filter

Clean the air filter at least once every two weeks to prevent inferior fan operation due to dust accumulation.

Take out the Air filter. Refer to Fig.2.

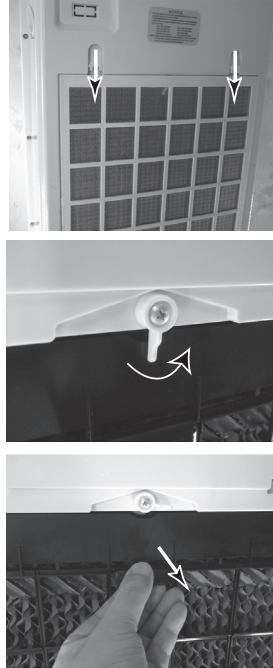


Fig. 2

Wash the air filter by immersing it gently in warm water with a neutral detergent. Rinse the filter and dry it in a shady place.

Put the Air filter and Filter cover back into the unit.



# Trouble Shooting

Always check full product operation as detailed above before calling for assistance, unless there is damage to the power cord or plug - in this situation, stop using the product immediately.

On humid days the unit may not appear to be cooling correctly. This is due to the air already being saturated with water. Adding more water to the air will not result in pulling the air temperature down. In these conditions, it is advisable to operate the unit as a fan only to circulate room air.

## For Your Safety

- Always operate the unit as detailed below.
  - If the plug and supply power cord are damaged, it must be replaced by the manufacturer, its service agent or a suitable qualified person in order to avoid a hazard.
  - CAUTION: To reduce the risk of electric shock, DO NOT remove the cover (or back) whilst the unit is in operation or connected to the mains supply.
  - This product operates with water - operate and move the product with extreme care.
  - Do not operate the unit with a damaged power cord or plug, or after the unit malfunctions, or is damaged in any manner. Return the complete unit to the place of purchase for in-warranty replacement, or inspection and repair.
-