



## HEATED TOWEL RAIL

MODEL: TW-C-WALL-5-BK



## USER MANUAL

Read this user manual carefully before using the product.  
Please retain this manual for future reference.

**THIS HEATED TOWEL RAIL IS DESIGNED FOR USE  
IN BATHROOMS AND LAUNDRY AREAS.**

## **SPECIFICATIONS**

VOLTAGE: AC220-240V  
FREQUENCY: 50Hz  
RATED POWER: 80W  
DIMENSIONS: 630mm x 570mm x 105mm

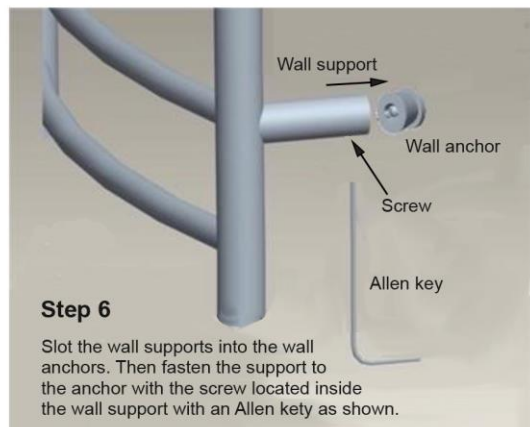
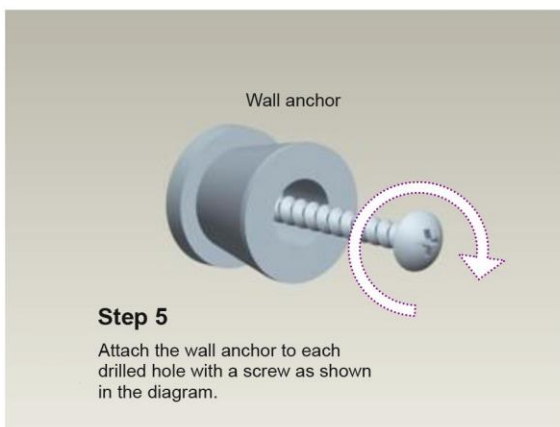
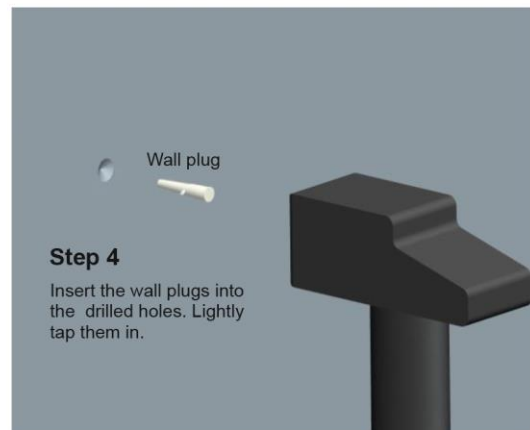
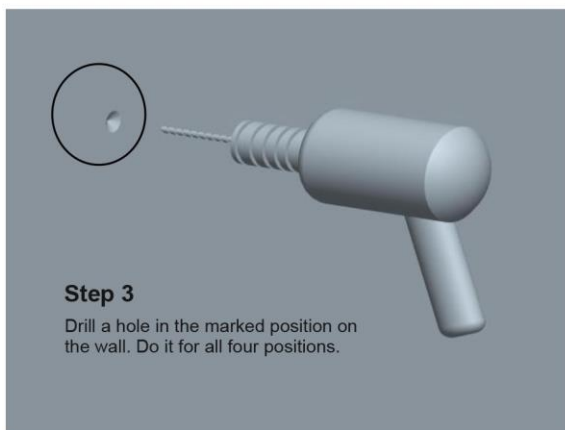
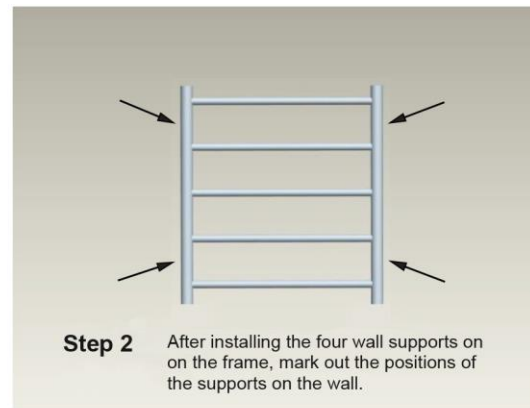
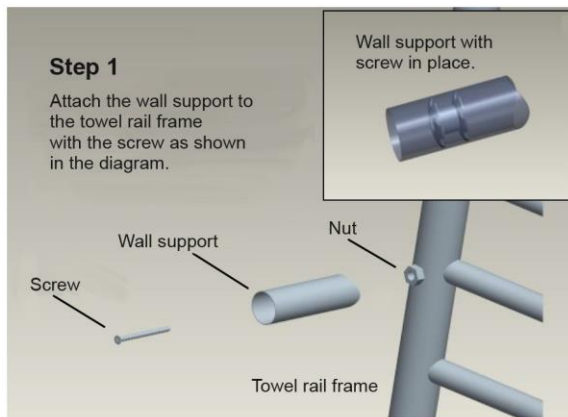
## **OPERATING INSTRUCTIONS**

1. Install the heated towel rail as outlined in the wall installation instructions.
2. Plug in the power cord into a mains supply outlet.
3. On connection to the mains supply outlet, the towel rail will begin to warm up.
4. To turn off the heated towel rail, unplug the power cord from the mains supply outlet.

# TOWEL RAIL INSTALLATION

## WARNING

- This heated towel rail is intended only for textiles washed in water.
- It must be installed at a distance of at least 0.6m away from bathroom tubs and showers.



## **SAFETY PRECAUTIONS**

- Extreme caution is necessary when the heated towel rail is used by or near children or disabled persons and whenever the heated towel rail is left operating and unattended.
- Always unplug the heated towel rail when not in use.
- Do not operate the heated towel rail with a damaged cord or plug or after the appliance malfunctions, has been dropped or damaged in any manner. Consult qualified service personnel for examination, electrical or mechanical adjustment or repairs.
- If the power cord is damaged, it must be replaced by the manufacturer or similarly qualified personnel in order to avoid a hazard.
- Do not use the appliance outdoors.
- Never locate the appliance where it may fall into a bathtub or other water containers.
- Never run the power cord under any carpet or rug or cover with the cord with throw rugs and runners. Arrange the cord to be away from traffic areas and where it will not be tripped over.
- To disconnect the appliance, remove the plug from the mains supply outlet.
- Do not use the appliance where flammable materials such as paints and petrol are present.
- Use the appliance only as described in this manual. Any other use not recommended by the manufacturer may cause fire, electric shock or injury to persons.
- This appliance is not intended for use by persons (including children) with reduced physical, sensory or mental capabilities, or lack of experience and knowledge, unless they have been given supervision or instruction concerning the use of the appliance by a person responsible for their safety. Children should be supervised to ensure that they do not play with the appliance.

## **CAUTION**

- This heated towel rail only operates in an upright position.
- Store the appliance in a cool dry location when not in use.
- Do not remove or store the appliance until it has cooled down.
- All servicing and related works must be done by qualified service personnel.
- The appliance must not be located directly below a mains supply outlet.