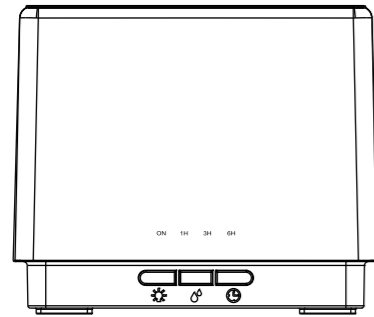


DEVANTI

Aroma Diffuser

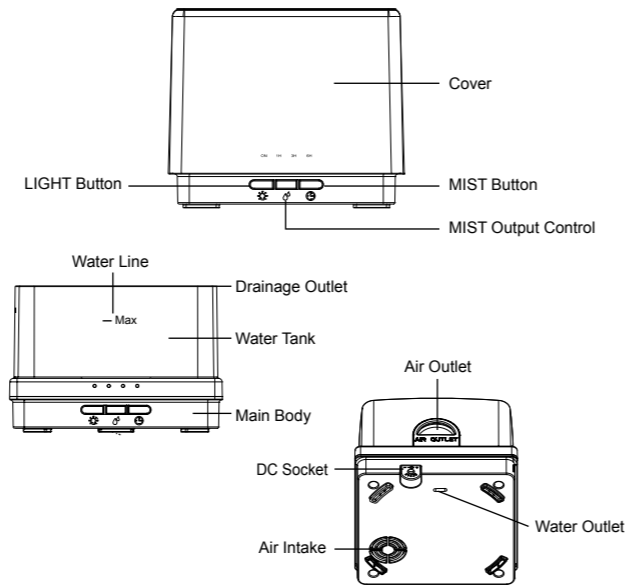
User Manual

DIFF-166-LW



Aroma Diffuser

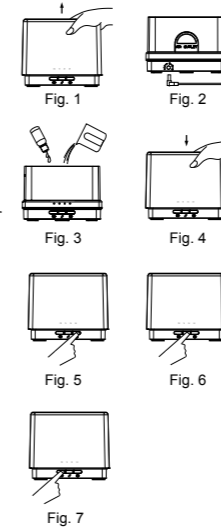
This Aroma Diffuser uses Ultrasonic Technology to atomize the water and essential oil in the water tank, and produces a cool, humid and fragrant mist.



Aroma Diffuser

OPERATION

- Position the Aroma Diffuser upright, pull upwards to remove cover. (Fig. 1)
- Connect AC adaptor power cord into the DC input jack at the base of the Aroma Diffuser. It is suggested to route cable via track provided. (Fig. 2)
- Pour water and essential oil into Aroma Diffuser. DO NOT fill above the "MAX" marking 600ml. DO NOT use boiling water. DO NOT fill when power is on. It is recommended to add 2-3 drops of essential oil for each 100ml of water. (Fig. 3)
- Set the cover back on the base. Spout is adjustable to guide aroma into desired direction. Aroma Diffuser must NOT be operated without the cover. (Fig. 4)
- Plug diffuser into power outlet.
- To turn on mist, touch "MIST" button and choose your desired operation time (Timing: ON/1H/3H/6H); Press and hold "MIST" to turn off the diffuser. (Fig. 5)
- Mist level is adjustable by touching "MIST Output Control" button. (One beep for high, and two beeps for low.) (Fig. 6)
- Press "LIGHT" button to turn on LED light. Brightness is adjustable through the following cycle. (Bright -> Dim -> Off) (Fig. 7)
- It is recommended to drain water from tank and keep dry when not in use.
- Diffuser will automatically shut off when there is insufficient water.



Aroma Diffuser

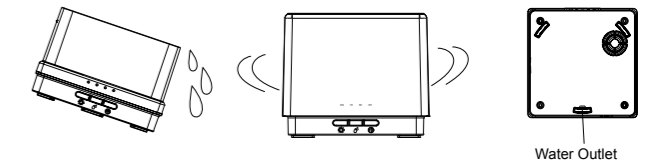
ATTENTION

- The amount and intensity of mist will vary depending on water type, temperature and air currents.
- Automatically powers off when water runs out.
- Only use 100% natural essential oils. Using oils that contain chemical ingredients, flavors or impurities may cause damage to the product.

ACCIDENTAL LEAKAGE

In the event of the unit being knocked over or tipped during use, please follow the steps below to avoid damage to the unit:

- Unplug the unit and remove cover.
- Pour out any remaining water from the water tank.
- Tip the unit to drain water, and then air dry it for at least 24 hours.

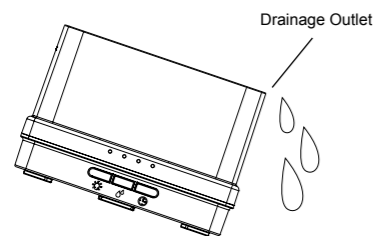


Aroma Diffuser

MAINTENANCE

After using 5-6 times, or 3-5 days, please clean the product as follow:

- Unplug the unit and remove cover.
- Pour out any remaining water from the tank.
- Use a small amount of dish soap to clean. Gently wipe with a soft cloth. Use a dry towel to dry the diffuser after it is clean.
- NEVER use other acids or enzymes to clean the unit as they could react with the essential oil residue and cause harmful vapors to be released or cause a malfunction.



Aroma Diffuser

PRECAUTIONS

Please read below to avoid any malfunction to the unit:

- If you are not a technician do not try to dismantle the diffuser to repair it. Contact the seller if repair is necessary.
- Do not turn power on when the tank is empty.
- Do not touch the atomization plate.
- Clean regularly as per Maintenance instructions to avoid malfunction.
- Always unplug before maintenance.
- For hygiene reasons, after use, pour out the remaining water from the tank and wipe with a clean dry cloth.
- Only use the measuring cup to add water into the tank, do not fill water directly from the sink.
- Do not let mist come in direct contact with furniture, clothing, walls, etc.
- Keep out of direct sunlight.
- Always keep on a hard, stable, flat surface. Do not place on a towel, carpet or any other unstable surface.
- Keep away from electronic equipment, such as TV and Audio equipment.
- Wait 60 minutes between uses to avoid damage to the atomization piece.
- Do not use sparkling water. Only use tap water or mineral water.
- Never move product when it is working.
- Do not touch any part of the product with wet hands.
- Keep away from pets and small children.
- If the power cord is smoking or burning, unplug immediately!

Aroma Diffuser

TROUBLESHOOTING

Please refer to the table below in the event of the product operating abnormally:

| If product doesn't work well, please refer to the following points before requesting repairs: | |
|---|---|
| Will not switch on or switch off | <ul style="list-style-type: none"> Is there enough water in the tank? -- Please add water to the tank. Is the power cord connected properly? -- Please disconnect, check cables and re-connect carefully. |
| No mist or abnormal mist | <ul style="list-style-type: none"> Not enough water? or too much water? -- Please add suitable amount of water in the tank, water must never be filled over 600ML (MAX) line. Dirt or dust in the air intake on the underside of the base? -- There is a fan on the underside of the base that is required to blow the mist out. If it gets clogged with dust or dirt it will prevent mist from coming out. |
| Water leakage from product | <ul style="list-style-type: none"> Cover not set on the base properly? -- Remove the cover and set it back on the base right above the buttons. Low temperature or high humidity? -- Under these conditions, the mist may condense quickly into water droplets. |

Aroma Diffuser

SPECIFICATIONS

| | |
|---------------------------|--------------------------------|
| Dimensions | (L)155 x (W)155 x (H)133MM |
| Weight(excluding adaptor) | Approx 549G |
| Power: Input/Output | AC100-240V 50/60Hz DC24V 650mA |
| Length of cord | Approx 170CM |
| Power | Approx 14W |
| Working Mode | ON/1H/3H/6H |
| Tank Capacity | 600ML |
| LED light | 6PCS |
| Material | PP/ABS |
| Accessory | AC Adapter and User Manual |
| Working frequency | 2.4MHz |

Aroma Diffuser